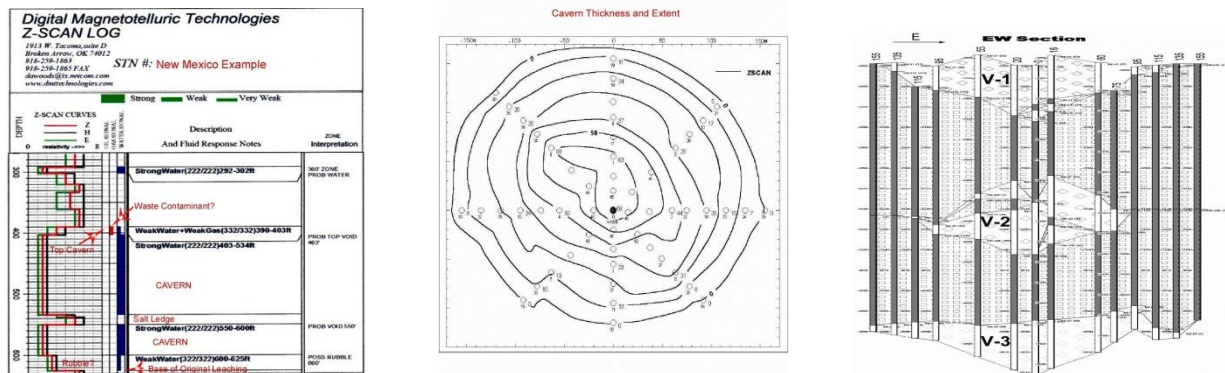


Digital Magneto-telluric Technologies, DMT

Nineteen Years of Cavern Imaging

DMT began imaging solution caverns in 1997 for Newpark Environmental, as an extension of our oil and gas exploration services which began in the late 1980s. In April of 1999, DMT presented the results of cavern imaging to The Solution Mining Research Institute. The SMRI paper link is www.southportexploration.com/DMTFILES/VOIDCAVITYFINAL32.pdf. These results, which compared the ZSCAN high resolution Magneto-Telluric imaging system to downhole Sonar, were in support of eventual approval by the Railroad Commission of Texas for the use of our Technology in delineating the dimension and volume of subsurface caverns in Texas. Since then we have worked for seventeen different companies in Canada, United States and Mexico, providing dimensions and critical cavern information from surface collected electromagnetic data **without the need for a borehole and the use of invasive downhole tools**. To date, we have evaluated over one hundred and ten caverns and helped large companies including Morton Salt, BHP, AMEC, IMC, Koch and Enbridge International resolve questions specific to their solution caverns and storage units.

Example: Single Station Vertical ZSCAN Log, Survey Pattern and ZSCAN Cross Section:



ZSCAN minimum void resolution is 3' to a depth of 5000'. ZSCAN is unaffected by fluid velocity. Horizontal accuracy is .005 X Depth. Survey results can include cavern volume and limits, evidence of "roof fall", estimated top of rubble, base of original leaching and evidence of contamination of cavern fluid.

DMT is available now to help you with your cavern imaging needs. Please call to discuss the ZSCAN Technology and /or your project. We will be happy to develop a ZSCAN "Scope of Work" and "Cost Estimate".

Contact: Dan Woods, Geophysicist, DMT Technologies
P.O. Box140755
Broken Arrow, Ok USA 74014
918-259-1863
dawoods@ix.netcom.com